

A1000

adaptis
BY CONVIRON®

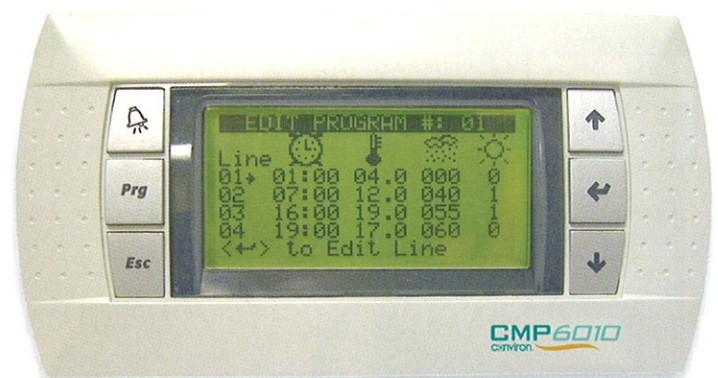


ADAPTIS A1000

Conviron introduces the latest innovation in controlled environment chambers – the Adaptis A1000. With its unique ability to ‘adapt’ to four different research applications, the Adaptis A1000 is truly four units in one. Order the A1000 base unit along with the application kit of your choice. If your research changes, simply purchase a different kit that easily adapts your A1000 to your new application. With the A1000 you will always have the ideal environment.

CMP6000™ Control System

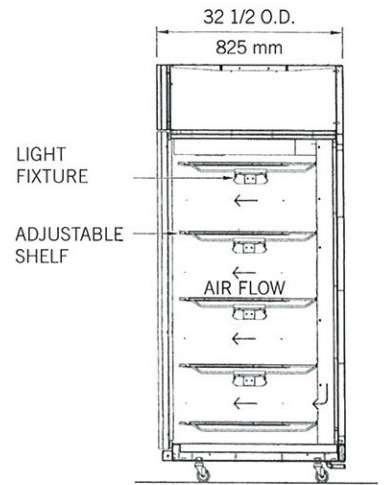
Another innovation is Conviron's new CMP6000™ Series Control System. With features that include a graphic display interface, real-time operation, program sequencing, visual and audible alarms, and on-screen help, the CMP6010 helps you stay focused on doing research. CMP6010 – smart, efficient control of your Adaptis A1000.



A1000 IN INCUBATION KIT



Created for the incubation of plantlets and insects, the IN Kit provides maximum flexibility with removable and adjustable lamp fixtures and shelves. Additional shelves and lighting are available to maximize utilization of the cabinet's 1,000 litre capacity.



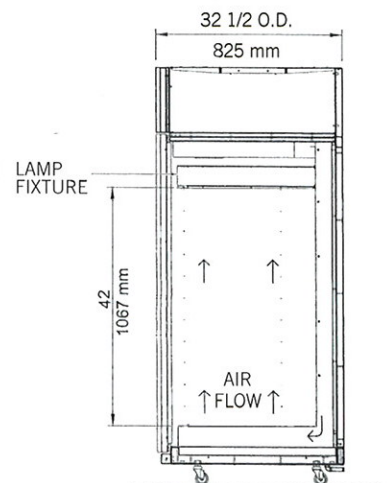
SPECIFICATIONS / ADDITIONS

- Four double lamp fixtures
- 26.0 ft² (2.4 m²) of growth area with a growth height of 10" (250mm)
- Perforated back wall plenum
- Uniform horizontal air delivery
- Four adjustable shelves

A1000 PG PLANT GROWTH KIT



The PG Kit is designed for plant growth research applications. Included with the PG Kit is a barriered canopy which removes lamp heat and exhausts it to ambient allowing for high light intensity and uniformity. Uniform upward airflow helps provide ideal plant growth conditions.



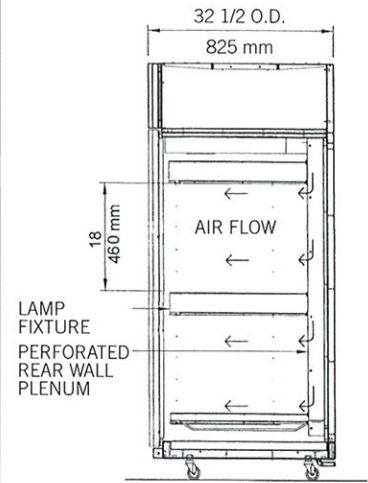
SPECIFICATIONS / ADDITIONS

- Single lamp canopy provides 500 $\mu\text{moles/m}^2/\text{s}$ of light
- 6.5 ft² (0.6 m²) of growth area with a growth height of 42" (1.1 m)
- Solid back wall pressure plenum and Conviron's Unifloor system
- Uniform upward air delivery

A1000 AR ARABIDOPSIS KIT



Designed for smaller plants such as Arabidopsis, the AR Kit maximizes efficiency by providing two fully-usable growth areas with separate lamp canopies. And with horizontal airflow, shelves can be loaded to capacity without the worry of obstructing airflow. Two drain pans capture overflow when watering plants.



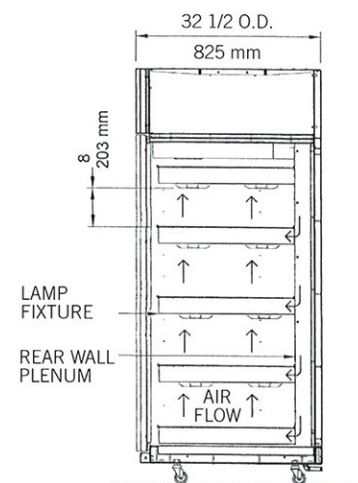
SPECIFICATIONS / ADDITIONS

- Two lamp canopies each providing 425 $\mu\text{moles}/\text{m}^2/\text{s}$ of light
- 13.0 ft^2 (1.2 m^2) of growth area with a growth height of 18" (500mm)
- Perforated back wall plenum
- Uniform horizontal air delivery
- Two adjustable shelves

A1000 TC TISSUE CULTURE KIT



The TC Kit is designed for tissue culture research applications. Precisely controlled vertical airflow to each independently lit and thermally broken tier helps to reduce condensation on research specimens.



SPECIFICATIONS / ADDITIONS

- Eight double lamp fixtures - two per shelf
- 26.0 ft^2 (2.4 m^2) of growth area with a growth height of 8" (200mm)
- Solid back wall plenum and pressurized air shelves
- Uniform vertical air delivery
- Four adjustable shelves

A1000 BASIC CONFIGURATION

SPECIFICATIONS

1.0 CONTROL SYSTEM

- 1.1 Flexible and reliable CMP6010™ LCD interfaced PID solid-state control system with intuitive selectable menus
- 1.2 Simple programming – able to set multiple set points per day and multiple days per schedule
- 1.3 Visual display of set points and actual chamber conditions
- 1.4 On screen HELP
- 1.5 Visual and audible alarms
- 1.6 Real-time clock with battery back-up for program retention

2.0 ENVIRONMENTAL CONTROL

- 2.1 Temperature range from 4°C to 40°C lights OFF, 10°C to 45°C lights ON
- 2.2 Control of $\pm 0.5^\circ\text{C}$
- 2.3 Additive humidity resultant to 90% RH $\pm 6.0\%$, limited by a $+24^\circ\text{C}$ dew point using ultrasonic humidifiers (lights off)
- 2.4 Adjustable high and low temperature limits with visual and audible alarms

3.0 LIGHTING

- 3.1 As per applications

4.0 GROWTH AREA

- 4.1 As per applications

5.0 CONSTRUCTION

- 5.1 Interior dimensions of 37" W x 25" D x 54½" H (940mmW x 635mmD x 1385mmH)
- 5.2 Growth volume approximately 35ft³ (1000 litres)
- 5.3 Smooth stainless steel interior finish with texture coated exterior
- 5.4 Foamed panel insulation
- 5.5 Flush, full-width door with keyed lock and magnetic gaskets for positive perimeter seal
- 5.6 Heavy-duty swivel casters

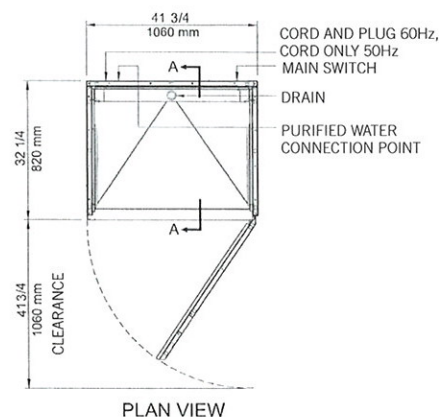
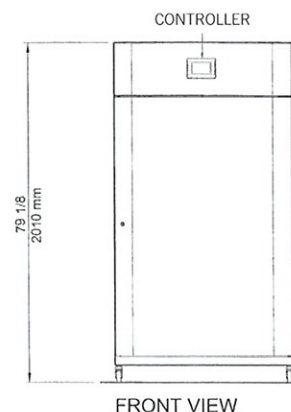
6.0 REFRIGERATION SYSTEM

- 6.1 Air-cooled condensing unit with hot gas bypass system for continuous compressor operation
- 6.2 Long life solenoid valve smoothly modulates heating and cooling
- 6.3 Condensing unit charged with CFC-free refrigerant

7.0 UTILITY REQUIREMENTS

- 7.1 Electrical Services:
60Hz – 120v – 1 ϕ – 20 amp

DIMENSIONS FOR BASIC CONFIGURATION



ACCESSORIES

- HL Additional lighting to achieve 125 micromoles/m²/sec (available for IN kit only)
- DP Evaporative drain pan
- S Additional shelf

ADAPTATIONS

- IN kit for Incubator applications
- PG kit for Plant Growth applications
- AR kit for Arabidopsis applications
- TC kit for Tissue Culture applications

LIGHT INTENSITY (@ 25°C)

- PG 500 μmoles , 3 level control
- AR 425 μmoles , 3 level control
- TC 200 μmoles , on/off
- IN 75 μmoles , on/off

Kits require assembly with simple tools

NOTE: Photographic images may differ slightly from actual configuration

www.convirion.com | info@convirion.com

ISO9001



590 Berry Street
Winnipeg, Manitoba
Canada R3H 0R9

Tel: 204-786-6451
Toll Free N.A.: 800-363-6451
Fax: 204-786-7736

A1000 Last edit: December 07

Printed in Canada. ©2007 Controlled Environments Limited. Convirion is a registered trademark of Controlled Environments Limited. All other trademarks are the property of their respective owners. Information subject to change without written notice.