

The lightweight champion.

**Thermo Scientific
Finnpipette® F2**



New AVG improves accuracy and precision



Very light and smooth pipetting action



Fully autoclavable



5 year warranty

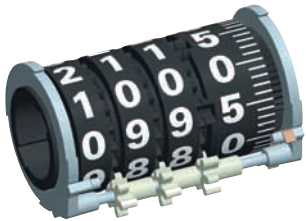


The Thermo Scientific Finnpiquette F2

Introducing the new Thermo Scientific Finnpiquette F2, a pipette that has all the right qualities – it has a light pipetting action, it's easy to use, and it's fully autoclavable. Furthermore, the Finnpiquette F2 offers outstanding reliability, which we guarantee with a 5 year warranty. Add to this great accuracy and precision, and you know the Finnpiquette F2 is a winner.

Advanced Volume Gearing (AVG)

As accuracy and precision are the most vital aspects of any pipette, we developed the Finnpiquette F2 with a self-supporting modular volume adjustment mechanism. Because the AVG mechanism is separated from the pipette body, its accuracy and precision, as well as its durability, are significantly improved. In addition, to eliminate the possible effects of hand warmth on the accuracy of your measurements, the AVG mechanism is also thermally isolated from the pipette body.

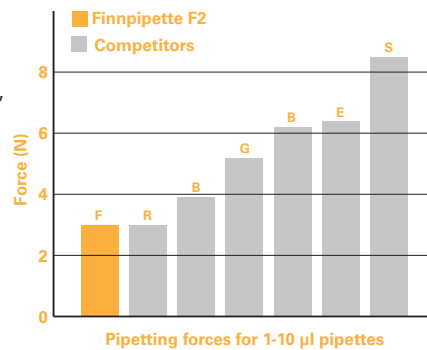


Large Ergovisio Display

The Finnpiquette F2 has a large easy to read Ergovisio display that makes setting volumes clear and easy. And the fine adjustment ruler lets you easily check the last digit, which is presented against a clear linear scale. This allows you to make the most of the precision click volume adjustment, which enables volume increments as

small as 0.2 μ l or 1 μ l depending on the pipette model.

Beside the large display is a convenient space for the user's personal identity tag to help ensure that pipettes do not get mixed up or lost in the laboratory.



Light Pipetting Action

As always with Thermo Scientific Finnpiquettes, the forces needed for pipetting have been minimized. The design of the Finnpiquette F2 allows users to depress the pipetting button with just a small amount of effort, for a light, smooth and steady pipetting action. The light and steady movement enables better pipetting results over longer pipetting periods. In addition, the patented super blow-out feature ensures the delivery of micro-size drops. The super blow-out piston is incorporated into pipettes with volumes of 50 μ l and below.



Double Action Pipetting Button

The Finnpiquette F2 has a revolutionary double-action pipetting button with a rotating upper part, for easy and exceptionally light volume setting. An additional benefit is that the rotating upper part of the button moves independently of the volume setting mechanism, to prevent unintentional changes in volume settings. Like the lower adjustment wheel, it is made of a softer plastic material to offer excellent grip with effortless volume adjustment.

Fully Autoclavable

High quality results depend on absolute sterility, to provide this and to prevent cross contamination, the Finnpiquette F2 is autoclavable at 121°C. The entire pipette can be autoclaved in one piece or in separate pieces in a sterilization bag. The pipette is constructed with materials that have a high resistance to reagents, UV-light and moisture.



Designed with you in mind

We designed the Finnpiquette F2 taking the needs and wants of real pipette users into account. It offers superior comfort, performance, reliability and repeatability in one of the lightest pipettes available.



Comfortable ergonomics

The Finnpiquette F2 has a supportive finger rest that lets you hold it at the ideal pipetting angle and lets your hand relax between pipetting cycles. As a result, it makes long periods of repetitive pipetting much more comfortable and less tiring, and reduces the risk of Repetitive Strain Injury (RSI). The tip ejector button is rounded and ergonomically designed to enable the most comfortable thumb position.

Easy In-lab Service and Calibration

The Finnpiquette F2 is very easy to service; simply open the pipette by removing the tip ejector by hand, and then use the handy maintenance tool to remove the tip cone. The same practical tool is used to adjust the pipette's calibration using the calibration nut located at the top of the pipette handle.





Choose the FinnpiPETTES you need

To match the needs of every lab, the FinnpiPETTE F2 is available in single channel and multichannel versions. The single channel pipettes are available as variable volume or fixed volume models. Sturdy and stable pipette stands are available as an option for both single and multichannel models. Each FinnpiPETTE F2 has convenient color coding on the volume adjustment ring and on the top cover of the handle, as well as on the multichannel modules, for easier recognition of the suitable Finntip.

Thermo Scientific FinnpiPETTE F2 Multichannels

The FinnpiPETTE F2 multichannel pipettes are available in 8-, 12- and 16-channel models with a selection of volume ranges. As with the single channel FinnpiPETTE F2 pipettes, the AVG mechanism ensures a high level of accuracy and precision. In addition, in the low volume models the super blow-out function ensures accurate dispensing for even the lowest volumes.



Thermo Scientific Finntip® – Complete pipetting systems

Finntip pipette tips combine with Thermo Scientific Finnpipettes to form a complete, optimized pipetting system. Our selection of Finntips covers everything you are likely to need, from day to day pipetting to special tips, wide orifice tips, positive displacement tips, and stepper tips.



Finntip Flex tips

Our newest introduction is the innovative Finntip Flex system, the latest breakthrough in pipette tip technology. Designed to meet the needs of today's pipette users, the Finntip Flex system consists of easy-to-use, soft, flexible high-end tips and a tip rack with space-saving refill kits. Finntip Flex tips are available in a range of volumes covering 0.1-10 µl tips to 1200 µl tips, as well as a 10 ml tip, and come as standard racked tips, sterile tips or filter tips.

Extra smooth tip surface

All Finntip Flex tips are molded with diamond polished tooling for an extra smooth tip surface and improved tip transparency. The smooth tip wall surface prevents liquid retention and achieves better pipetting precision than non-polished tips. The increased precision is most beneficial with small volume pipetting where

precision values can be improved by approximately 50%.

Flexible in every way


With their special thin wall molding, the soft tip of the Finntip Flex reduces the amount of force needed to attach and eject tips, significantly lowering the risk of RSI. It also ensures a better seal with the pipette module, for greater accuracy and precision.

Rack and refill

The new Finntip Flex racks are easy to open with one hand and have a sturdy base and non-slip feet, allowing you to easily yet firmly attach the tip. Additionally, the refill system saves space and allows fast tip matrix plate attachment with just one click. Ten refill plates are stacked compactly to reduce material use, eliminate waste and keep the plates free from dust.

For information on our full product range the Thermo Scientific Finnpipette and Finntip Catalog is available from your nearest representative and can also be downloaded from: www.thermo.com/finnpipette


NEW Finntip Flex 10



Cat. no.	Description	Quantity
94060100	Finntip Flex 10	10x96/rack
94060103	Finntip Flex 10 sterile*	10x96/rack
94060116	Finntip Flex 10 refill starter kit	1x96/rack + 20x96/refill
94060117	Finntip Flex 10 refill kit	20x96/refill
94060120	Finntip Flex 10	1000/bag

Color code: Pink Length: 3.3 cm


NEW Finntip Flex 200



Cat. no.	Description	Quantity
94060310	Finntip Flex 200	10x96/rack
94060313	Finntip Flex 200 sterile*	10x96/rack
94060316	Finntip Flex 200 refill starter kit	1x96/rack + 20x96/refill
94060317	Finntip Flex 200 refill kit	20x96/refill
94060320	Finntip Flex 200	1000/bag

Color code: Yellow Length: 6.0 cm


Finntip Flex 300



Cat. no.	Description	Quantity
94060510	Finntip Flex 300	10x96/rack
94060513	Finntip Flex 300 sterile*	10x96/rack
94060516	Finntip Flex 300 refill starter kit	1x96/rack + 20x96/refill
94060517	Finntip Flex 300 refill kit	20x96/refill
94060520	Finntip Flex 300	1000/bag

Color code: Orange Length: 6.2 cm


Finntip Flex 1000



Cat. no.	Description	Quantity
94060710	Finntip Flex 1000	10x96/rack
94060713	Finntip Flex 1000 sterile*	10x96/rack
94060716	Finntip Flex 1000 refill starter kit	1x96/rack + 16x96/refill
94060717	Finntip Flex 1000 refill kit	16x96/refill
94060720	Finntip Flex 1000	1000/bag

Color code: Blue Length: 8.7 cm


Finntip Flex 1200



Cat. no.	Description	Quantity
94060810	Finntip Flex 1200	10x96/rack
94060813	Finntip Flex 1200 sterile*	10x96/rack
94060816	Finntip Flex 1200 refill starter kit	1x96/rack + 16x96/refill
94060817	Finntip Flex 1200 refill kit	16x96/refill
94060820	Finntip Flex 1200	1000/bag

Color code: Turquoise Length: 8.7 cm

Finntip Flex 10 ml Extended



Cat. no.	Description	Quantity
94060970	Flex 10 ml Ext.	100/bag
94060973	Flex 10 ml Ext. sterile	50/bag

Length: 26.7 cm

Finntip Flex - Filter Pipette Tips

Cat. no.	Description	Volume	Quantity
94056980	Flex Filter 10 sterile*	0.2-10	10x96 rack
94056510	Flex Filter 30 sterile*	5-30	10x96 rack
94056520	Flex Filter 100 sterile*	5-100	10x96 rack
94056380	Flex Filter 200 sterile*	5-200	10x96 rack
94056580	Flex Filter 300 sterile*	5-300	10x96 rack
94056710	Flex Filter 1000 sterile*	100-1000	10x96 rack
94056810	Flex Filter 1200 sterile*	50-1200	10x96 rack
94056970	Flex Filter 10 ml Ext. sterile	1-10 ml	50/bag

Finntip 5 ml

Cat. no.	Description	Quantity
9402 050	Finntip 5 ml	75/box
9402 030	Finntip 5 ml	500/bag
9402 010	Finntip 5 ml	3000/bulk
9402 070	Finntip 5 ml	5x54/rack
9402 073	Finntip 5 ml sterile	5x54/rack

Color code: Green Length: 14.7 cm

Finntip 10 ml

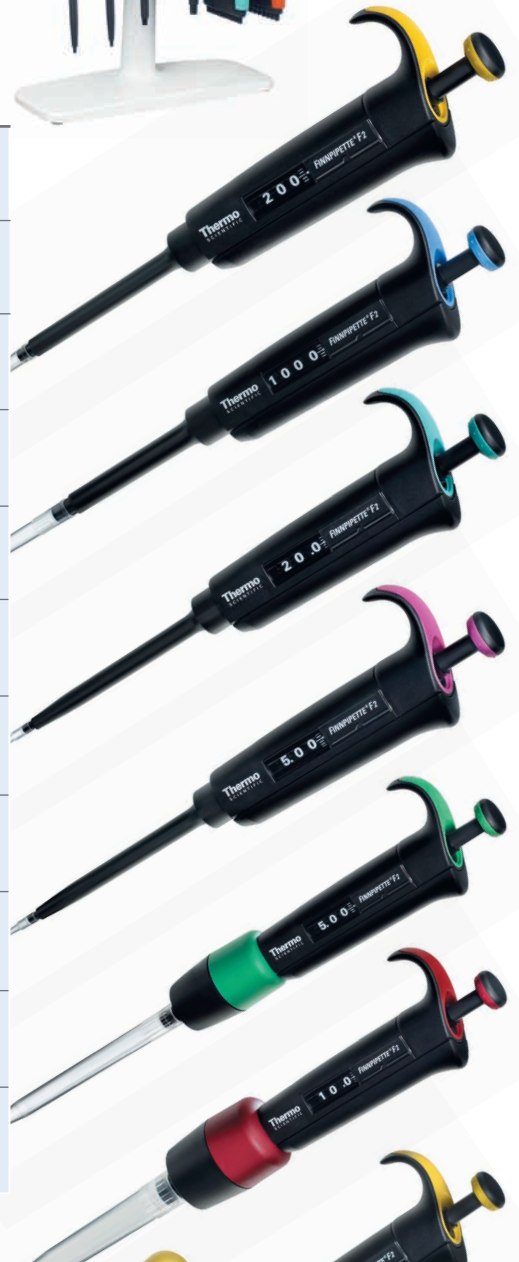
Cat. no.	Description	Quantity
9402 150	Finntip 10 ml	40/box
9402 151	Finntip 10 ml	100/bag
9402 160	Finntip 10 ml	5x24/rack
9402 163	Finntip 10 ml sterile	5x24/rack

Color code: Red Length: 15.0 cm

*Finntip steriles are certified to be free of Endotoxin, DNA, DNase and RNase.

Finnpipette F2 Variable Volume Single Channel

Cat.no.	Range	Increment	Volume μ l	Inaccuracy μ l	%	Imprecision s.d.* μ l	cv%	Color code	Finntip
4642010	0.2-2 μ l	0.002 μ l	2	\pm 0.050	\pm 2.50	0.040	2.00	Pink	Flex 10, 10, 50
			1	\pm 0.040	\pm 4.00	0.035	3.50		
			0.2	\pm 0.024	\pm 12.00	0.020	10.00		
4642020	0.5-5 μ l	0.01 μ l	5	\pm 0.075	\pm 1.50	0.050	1.00	Pink	Flex 10, 10, 50
			2.5	\pm 0.063	\pm 2.50	0.0375	1.50		
			0.5	\pm 0.030	\pm 6.00	0.025	5.00		
4642030	1-10 μ l	0.02 μ l	10	\pm 0.100	\pm 1.00	0.050	0.50	Pink	Flex 10, 10, 50
			5	\pm 0.075	\pm 1.50	0.040	0.80		
			1	\pm 0.025	\pm 2.50	0.020	2.00		
4642040	1-10 μ l	0.02 μ l	10	\pm 0.100	\pm 1.00	0.080	0.80	Yellow	Flex 200, 250 Univ.
			5	\pm 0.075	\pm 1.50	0.040	0.80		
			1	\pm 0.035	\pm 3.50	0.030	3.00		
4642050	2-20 μ l	0.02 μ l	20	\pm 0.20	\pm 1.00	0.08	0.40	Turquoise	50
			10	\pm 0.15	\pm 1.50	0.06	0.60		
			2	\pm 0.06	\pm 3.00	0.05	2.50		
4642060	2-20 μ l	0.02 μ l	20	\pm 0.20	\pm 1.00	0.08	0.40	Yellow	Flex 200, 250 Univ.
			10	\pm 0.15	\pm 1.50	0.06	0.60		
			2	\pm 0.06	\pm 3.00	0.05	2.50		
4642070	10-100 μ l	0.2 μ l	100	\pm 0.80	\pm 0.80	0.20	0.20	Yellow	Flex 200, 250 Univ., 300, 200 Ext.
			50	\pm 0.60	\pm 1.20	0.20	0.40		
			10	\pm 0.30	\pm 3.00	0.10	1.00		
4642080	20-200 μ l	0.2 μ l	200	\pm 1.2	\pm 0.60	0.4	0.20	Yellow	Flex 200, 250 Univ., 300, 200 Ext.
			100	\pm 1.0	\pm 1.00	0.4	0.40		
			20	\pm 0.36	\pm 1.80	0.14	0.70		
4642090	100-1000 μ l	1 μ l	1000	\pm 6.0	\pm 0.60	2.0	0.20	Blue	Flex 1000, 1000, 1000 Ext.
			500	\pm 4.0	\pm 0.80	1.5	0.30		
			100	\pm 1.0	\pm 1.00	0.6	0.60		
4642100	0.5-5 ml	0.01 ml	5000	\pm 25.0	\pm 0.50	10.0	0.20	Green	5 ml
			2500	\pm 17.5	\pm 0.70	7.5	0.30		
			500	\pm 10.0	\pm 2.00	4.0	0.80		
4642110	1-10 ml	0.02 ml	10000	\pm 50.0	\pm 0.50	20.0	0.20	Red	10 ml
			5000	\pm 40.0	\pm 0.80	15.0	0.30		
			1000	\pm 20.0	\pm 2.00	8.0	0.80		



Finnpipette F2 Variable Volume Multichannel

Cat.no.	Chan-nels	Range	Incr-ement	Volume μ l	Inaccu-racy μ l	%	Impreci-sion s.d.* μ l	cv%	Color code	Finntip
4662000	8	1.0-10 μ l	0.02 μ l	10	\pm 0.240	\pm 2.40	0.160	1.60	Pink	Flex 10, 10, 50
				5	\pm 0.200	\pm 4.00	0.150	3.00		
				1	\pm 0.120	\pm 12.00	0.080	8.00		
4662010	8	5-50 μ l	0.1 μ l	50	\pm 0.75	\pm 1.50	0.35	0.70	Yellow	Flex 200, 250 Univ., 200 Ext.
				25	\pm 0.625	\pm 2.50	0.30	1.20		
				5	\pm 0.25	\pm 5.00	0.10	2.00		
4662020	8	10-100 μ l	0.2 μ l	100	\pm 1.30	\pm 1.30	0.50	0.50	Yellow	Flex 200, 250 Univ., 200 Ext.
				50	\pm 1.25	\pm 2.50	0.060	1.20		
				10	\pm 0.50	\pm 5.00	0.20	2.00		
4662030	8	30-300 μ l	1 μ l	300	\pm 3.0	\pm 1.00	0.9	0.30	Orange	Flex 300, 300
				150	\pm 2.25	\pm 1.50	0.75	0.50		
				30	\pm 1.5	\pm 5.00	0.6	2.00		
4662040	12	1.0-10 μ l	0.02 μ l	10	\pm 0.240	\pm 2.40	0.160	1.60	Pink	Flex 10, 10, 50
				5	\pm 0.200	\pm 4.00	0.150	3.00		
				1	\pm 0.120	\pm 12.00	0.080	8.00		
4662050	12	5-50 μ l	0.1 μ l	50	\pm 0.75	\pm 1.50	0.35	0.70	Yellow	Flex 200, 250 Univ., 200 Ext.
				25	\pm 0.625	\pm 2.50	0.30	1.20		
				5	\pm 0.25	\pm 5.00	0.10	2.00		
4662060	12	10-100 μ l	0.2 μ l	100	\pm 1.30	\pm 1.30	0.50	0.50	Yellow	Flex 200, 250 Univ., 200 Ext.
				50	\pm 1.25	\pm 2.50	0.60	1.20		
				10	\pm 0.50	\pm 5.00	0.20	2.00		
4662070	12	30-300 μ l	1 μ l	300	\pm 3.0	\pm 1.00	0.9	0.30	Orange	Flex 300, 300
				150	\pm 2.25	\pm 1.50	0.75	0.50		
				30	\pm 1.5	\pm 5.00	0.6	2.00		
4662080	16	1.0-10 μ l	0.02 μ l	10	\pm 0.240	\pm 2.40	0.160	1.60	Purple	Flex 10 (384), 50
				5	\pm 0.200	\pm 4.00	0.150	3.00		
				1	\pm 0.120	\pm 12.00	0.080	8.00		
4662090	16	5-50 μ l	0.1 μ l	50	\pm 0.75	\pm 1.50	0.35	0.70	Turquoise	50
				25	\pm 0.625	\pm 2.50	0.30	1.20		
				5	\pm 0.25	\pm 5.00	0.10	2.00		

Finnpipette F2 Fixed Volume Single Channel

Cat.no.	Volume μ l	Inaccuracy μ l	%	Imprecision s.d.* μ l	cv%	Finntip
4652000	1	\pm 0.040	\pm 4.00	0.040	4.00	Flex 10, 10, 50
4652010	5	\pm 0.070	\pm 1.40	0.070	1.40	Flex 10, 10, 50
4652020	10	\pm 0.090	\pm 0.90	0.080	0.80	Flex 200, 250 Univ., 200 Ext.
4652030	25	\pm 0.15	\pm 0.60	0.13	0.50	Flex 200, 250 Univ., 200 Ext.
4652040	50	\pm 0.30	\pm 0.60	0.20	0.40	Flex 200, 250 Univ., 200 Ext.
4652050	100	\pm 0.40	\pm 0.40	0.30	0.30	Flex 200, 250 Univ., 200 Ext.
4652060	250	\pm 1.0	\pm 0.40	0.8	0.30	Flex 1000, 1000, 1000 Ext.
4652070	500	\pm 1.5	\pm 0.30	1.5	0.30	Flex 1000, 1000, 1000 Ext.
4652080	1000	\pm 3.0	\pm 0.30	3.0	0.30	Flex 1000, 1000, 1000 Ext.
4652090	2000	\pm 6.0	\pm 0.30	4.0	0.20	5 ml
4652100	3000	\pm 9.0	\pm 0.30	6.0	0.20	5 ml
4652110	5000	\pm 15.0	\pm 0.30	10.0	0.20	5 ml
4652120	10000	\pm 30.0	\pm 0.30	20.0	0.20	10 ml

*s.d. = Standard deviation; CV = Coefficient of variation

www.thermo.com/finnpipette

North America: +1 866 984 3766

Europe: Austria +43 1 801 40 0, Belgium +32 2 482 30 30, Finland/Nordic +358 9 329 100, France +33 2 28 03 20 00, Germany: national toll free 08001-536 376, international +49 6184 90 6940, Italy +39 02 95059 1, Netherlands +31 76 571 4440, Russia/CIS +7 (812) 703 42 15, Spain/Portugal +34 93 223 3154, Switzerland +41 44 454 12 12, UK/Ireland +44 870 609 9203

Asia: India +91 22 5542 9494, Japan +81 45 453 9220, China +86 21 6865 4588 or +86 10 5850 3588, Other Asian countries +852 2885 4613

Countries not listed: +49 6184 90 6940 or +33 2 28 03 20 00

© Thermo Fisher Scientific Inc. All Rights Reserved. All trademarks are the property of Thermo Fisher Scientific Inc. and its subsidiaries. Specifications, terms and pricing are subject to change. Not all products are available in all countries. Please consult your local representative for details.

