


**NEW! Thermo Scientific  
Forma® Rack and Accessory Guide  
For -40°C and -86°C Freezers**

**Optimize your freezer  
for maximum sample protection**



»» You can depend on your Thermo Scientific Forma freezer for the long-term protection of your valuable samples.

## Contents

**Rack Systems  
Upright Freezers**

*pages 4-7*

**Rack Systems  
Chest Freezers**

*pages 8-9*

**Accessories**

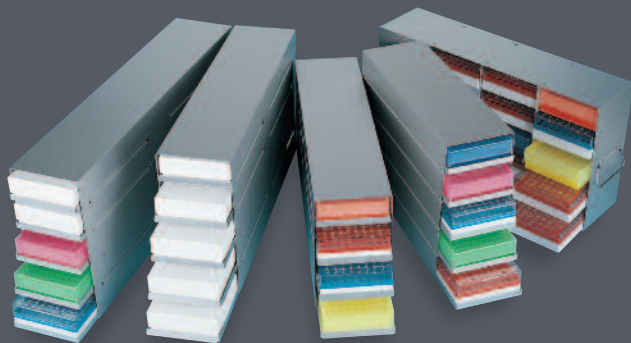
*pages 10-14*

# Racking solutions for your laboratory

Thermo Scientific Forma racks are an essential piece of a complete solution for all of your cold storage needs. Our racks and accessories offer proven reliability and quality you can depend on year after year.

Our exceptionally efficient storage configurations maximize productivity while reducing operating costs.

We allow you to maintain sample integrity by reducing the time it takes to access your samples. By reducing risk of exposure to ambient air with quick sample access, your research is safe.



*Maximize the value of your freezer with our intelligent rack solutions and accessories.*

*Selecting the appropriate racks for your application starts with two simple questions:*

## ***What kinds of samples are you storing?***

**The best choice of racks is determined by the nature of what you are storing.**

- Do you need 2-inch or 3-inch boxes for vials?
- Do you require microplate storage, for your microboxes and microtubes – and are they deep-well, shallow-well, or a combination?
- Do you have a need for bulk storage?
- Do you need additional accessories?

## ***Is your freezer upright or chest unit?***

**The style of your freezer will determine the best selection of rack options.**

For instance, our Forma racks with side access and sliding drawers are available for upright freezers. The sliding drawers offer unique advantages. The rack remains stationary and the drawers are light, making it easier to retrieve samples and minimize exposure to ambient conditions. Generally, racks are designed with specific dimensions and features including handle placement, depending on the style of your ultra-low temperature freezer.

Understanding your storage needs upfront and anticipating future requirements will help you determine the best choice of racks and accessories and assure you'll gain maximum value from your ultra-low temperature freezer.

# Thermo Scientific Forma Rack Systems Upright Freezers



Cat. No.	Description W x D x H mm	Freezer Volume cu ft (L)	Quantity of 2" Boxes	Quantity of 3" Boxes	Total Racks/ Shelf	Racks/ Freezer
----------	-----------------------------	--------------------------------	----------------------------	----------------------------	--------------------------	-------------------

## Sliding Drawer for: Single Door Freezers Bottom Half of Double Door (\*)

<b>H6C5KIT100</b> <b>H6C5/00</b>	<b>With 2" boxes and 100 place cell dividers</b>					
	<b>Without boxes</b>					
	140 x 410 x 305	13 (368)	15		4	16/8*

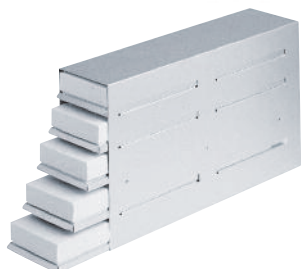
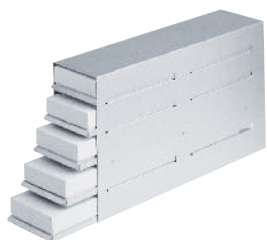
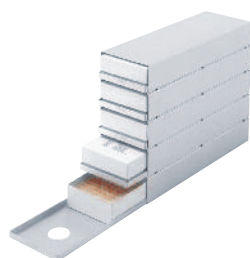
<b>H6C3KIT100</b> <b>H6C3/00</b>	<b>With 3" boxes and 100 place cell dividers</b>					
	<b>Without boxes</b>					
	140 x 545 x 305	13 (368)		9	4	16/8*

<b>H7C5KIT100</b> <b>H7C5/00</b>	<b>With 2" boxes and 100 place cell dividers</b>					
	<b>Without boxes</b>					
	140 x 545 x 305	17.3 (490)	20		4	16/8*
		23 (651)	20		5	20/10*

<b>H7C3KIT100</b> <b>H7C3/00</b>	<b>With 3" boxes and 100 place cell dividers</b>					
	<b>Without boxes</b>					
	140 x 545 x 305	17.3 (490)		12	4	16/8*
		23 (651)		12	5	20/10*

<b>H8C5KIT100</b> <b>H8C5/00</b>	<b>With 2" boxes and 100 place cell dividers</b>					
	<b>Without boxes</b>					
	140 x 673 x 305	28 (793)	25		6	24

\* Total racks/freezer capacity in the bottom half of double door models.



Cat. No.	Description W x D x H mm	Freezer Volume cu ft (L)	Quantity of 2" Boxes	Quantity of 3" Boxes	Total Racks/ Shelf	Racks/ Freezer
----------	-----------------------------	--------------------------------	----------------------------	----------------------------	--------------------------	-------------------

**Sliding Drawer for Single Door Freezers**



<b>H8C3KIT100</b>	<b>With 3" boxes and 100 place cell dividers</b>					
<b>H8C3/00</b>	<b>Without boxes</b>					
	140 x 673 x 305	28 (793)	-	15	6	24

**Side Access: Single Door Freezers  
Top Compartment of Double Door Freezer (\*) (with non-adjustable shelves)**



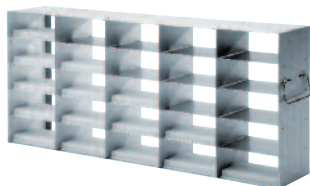
<b>H6C5/SA</b>	<b>Without boxes</b>					
	137 x 410 x 305	13 (368)	15	-	4	16/8*



<b>H6C3/SA</b>	<b>Without boxes</b>					
	137 x 410 x 305	13 (368)	-	9	4	16/8*



<b>H7C5/SA</b>	<b>Without boxes</b>					
	137 x 545 x 305	17.3 (490)	20	-	4	16/8*
		23 (651)	20	-	5	20/10*



<b>H8C5/SA</b>	<b>Without boxes</b>					
	137 x 673 x 305	28 (793)	25	-	5	20/10*



<b>H7C3/SA</b>	<b>Without boxes</b>					
	137 x 545 x 305	17.3 (490)	-	12	4	16/8*
		23 (651)	-	12	5	20/10*

\* Total racks/freezer capacity in the bottom half of double door models.

Cat. No.	Description W x D x H mm	Freezer Volume cu ft (L)	Quantity of 2" Boxes	Quantity of 3" Boxes	Racks/ Shelf	Total Racks/ Freezer
----------	-----------------------------	--------------------------------	----------------------------	----------------------------	-----------------	----------------------------

**Sliding Drawer for: Single Door Freezers with 5 Inner Door Option  
Top Half of Double Door Freezers (\*)**

<b>H6C4KIT100</b>	<b>With 2" boxes and 100 place cell dividers</b>					
<b>H6C4/00</b>	<b>Without boxes</b>					
	140 x 410 x 240	13 (368)	12	-	4**	20/8*

When ordering, please include one H6C5/00/P Probe relief rack with your order to accommodate probe.

<b>H6C5/00/P</b>	<b>Without boxes</b>					
	140 x 410 x 305	13 (368)	12	-	4	20/8*

Probe rack to be used with H6C5/00/P Probe relief rack, one rack per freezer required.

Please note H6C5KIT100 illustrated, note 4 trays only.

<b>H7C4KIT100</b>	<b>With 2" boxes and 100 place cell dividers</b>					
<b>H7C4/00</b>	<b>Without boxes</b>					
	140 x 545 x 240	17.3 (490)	16	-	4**	20/8*
		23 (651)	16	-	5	25/10*

<b>H7C5/00/P</b>	<b>Without boxes</b>					
	140 x 545 x 305	17.3 (490)	16	-	-	20/8*
		23 (651)	16	-	-	25/10*

Probe rack to be used with H7C5/00, one rack per freezer required.

When ordering, please include one H7C5/00/P Probe relief rack with your order to accommodate probe.

Please note H7C5KIT100 illustrated, note 4 trays only.


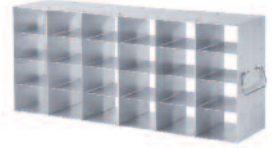

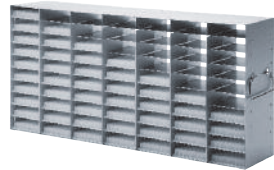
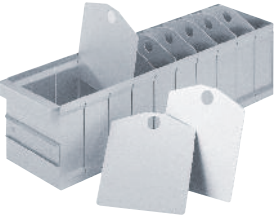

**Variable Side access Racks for either 2" or 3" Cryo Boxes.  
Single Door Freezers with 5 Inner Door Option Top Half of Double Door Freezers (\*)**

<b>H7C4-3/SA</b>	<b>Without boxes</b>					
	137 x 545 x 240	17.3 (490)	16	12	4**	20/8*
		23 (651)	16	12	5	25/10*

<b>H6C4-3/SA</b>	<b>Without boxes</b>					
	137 x 410 x 240	13 (368)	12	9	4**	20/8*

\* Total racks/freezer capacity in the top half of double door models.

\*\* Four tier racks are designed to suit either double door cabinets or five compartment options only.

	Cat. No.	Description W x D x H mm	Freezer Volume cu ft (L)	Microplates	Racks/ Shelf	Total Racks/ Freezer
<b>Microplate Racking for Single and Double Door options</b> (for other configurations, please contact your sales representative)						
	<b>H6C5/MP</b>	<b>5 pull out trays</b> 140 x 420 x 305	13 (368)	20 (60 shallow)	4	16/8*
	<b>H7C5/MP</b>	<b>5 pull out trays</b> 140 x 555 x 305	17.3 (490)	30 (90 shallow)	4	16/8*
	<b>H6C4/MP/SA</b>	<b>side access</b> 137 x 370 x 240	13 (368)	16 (48 shallow)	4*	20
	<b>H7C4/MP/SA</b>	<b>side access</b> 137 x 550 x 240	17.3 (490) 23.0 (651)		4** 5	20 25
	<b>H6C5/MP/SA</b>	<b>side access</b> 137 x 370 x 305	13 cu. ft. (368)	20 deepwell (60 stacked)	4	16
	<b>H7C5/MP/SA</b>	<b>30 position, side access</b> 137 x 550 x 305	17.3 (490) 23.0 (651)		4 5	16 20
	<b>923/S/10/SA</b>	<b>Side-access microplate rack</b> 137 x 625 x 305	17.3 (490) 23 (651)	70 single/140 double 20 (60 shallow)	4 5	16 20
	<b>925/S/10/SA</b>	<b>Side-access microplate rack</b> 137 x 477 x 305	13 (368)	50 single (100 stacked)	4	16
<b>General Sample Storage Bins</b>						
	<b>SB7</b>	<b>Multi-drawer rack</b> 140 x 420 x 140	13 (368)		4	15
	<b>SB8</b>	<b>Multi-drawer rack</b> 140 x 520 x 130H	17.3 (490) 23 (651)		4 4	15 15
	<b>SB1</b>	<b>Storage container</b> 140 x 470 x 275	13 (368)		4	15
	<b>SB2</b>	<b>Storage container</b> 140 x 630 x 275	17.3 (490) 23 (651) 28			15 20 24

\* Total racks/freezer capacity in the top half of double door models.

\*\* Four tier racks are designed to suit either double door cabinets or five compartment options only.



# Thermo Scientific Forma Rack Systems Chest Freezer

Cat. No.	Description W x D x H mm	Freezer Volume cu ft (L)	Quantity of 2" Boxes	Quantity of 3" Boxes	Total Racks/ Freezer
----------	-----------------------------	--------------------------------	----------------------------	----------------------------	----------------------------

## Vertical Cold Storage Rack with Handle

**K5A6**

**Without boxes**

140 x 139 x 345	3 (85)	6	9
	6.7 (190)	6	18

**K5A4**

**Without boxes**

140 x 139 x 345	3 (85)	4	9
	6.7 (190)	4	18

**K7A12**

**Without boxes**

140 x 139 x 648	12.7 (360)	12	21
	17 (481)	12	29
	20 (566)	12	33



Cat. No.	Description W x D x H mm	Freezer Volume cu ft (L)	Quantity of 2" Boxes	Quantity of 3" Boxes	Total Racks/ Freezer
----------	-----------------------------	--------------------------------	----------------------------	----------------------------	----------------------------



**Rack with Handle**

**K6A8**

**Without boxes**

140 x 139 x 690	12.7 (360)	8	21
	17 (481)	8	29
	20 (566)	8	33

**Microplate Rack with Handle**

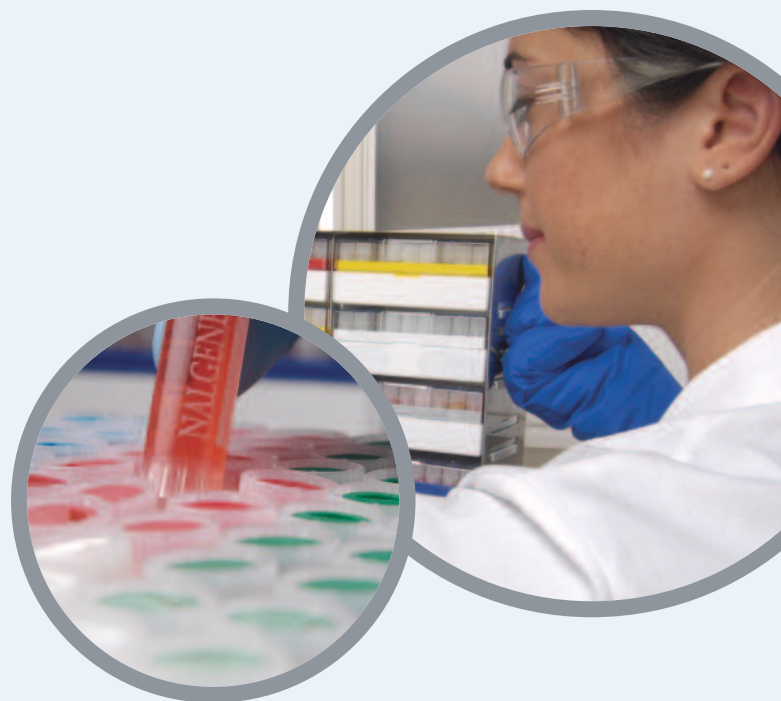
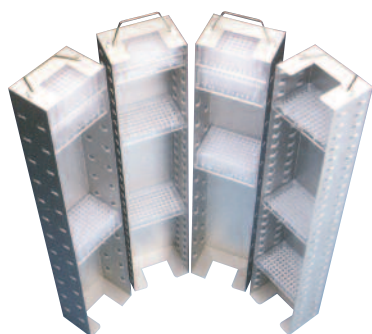
**K7/27SL**

**27 position, landscape**

**K7/27SP**

**27 position, portrait**

131 x 87 x 690	12.7 (360)		33
	17 (481)		48
	20 (566)		51



NALGENE® and NUNC™ cryogenic storage give you everything you need to safely store precious specimens, organize freezer space and simplify sample retrieval.

NALGENE and NUNC combine to provide one-stop shopping for the widest variety and highest quality of externally and internally threaded cryovials, storage boxes, lab top coolers and “Mr. Frosty” controlled rate freezing containers.

For further information regarding these products - visit [www.nalgene.com](http://www.nalgene.com) or [www.nuncbrand.com](http://www.nuncbrand.com)



# Thermo Scientific Accessories

## Storage Boxes, Dividers and Markers for All Freezers

Cat. No. Description

### Storage Boxes

	5.3" x 5.3" (13.5cm x 13.5cm)
<b>820002</b>	2.0" (5.1cm) high box (water repellent cardboard box with 81 cell dividers)
<b>820003</b>	3.0" (7.6cm) high box (water repellent cardboard box with 81 cell dividers)
<b>820010</b>	2.0" (5.1cm) high polycarbonate box, includes 100-cell divider with 0.5" (1.3cm) openings, 5.3" x 5.3" x 2.0"H (13.5cm x 13.5cm x 5.1cm), Holds 1.0, 1.5, and 2.0ml vials and features a numerical grid system printed on the cover for inventory purposes
<b>820011</b>	2.0" (5.1cm) high polycarbonate box, includes 81-cell divider with 0.5" (1.3cm) openings, 5.3" x 5.3" x 2.0"H (13.5cm x 13.5cm x 5.1cm), Holds 1.0, 1.5, and 2.0ml vials and features a numerical grid system printed on the cover for inventory purposes
<b>820013</b>	2.0" (5.1cm) high polycarbonate box, includes 81-cell divider with 0.5" (1.3cm) openings, 5.3" x 5.3" x 3.3"H (13.5cm x 13.5cm x 8.4cm), Holds 3.0, and 4.0ml cryotubes and features a numerical grid system printed on the cover for inventory purposes

### Cell Dividers

<b>820016</b>	16-cell, 1.22" (3.0cm) nominal opening
<b>820025</b>	25-cell, 0.98" (2.5cm) nominal opening
<b>820049</b>	49-cell, -0.70" (1.7cm) nominal opening
<b>820064</b>	64-cell, 0.61" (1.5cm) nominal opening
<b>820081</b>	81-cell, 0.54" (1.3cm) nominal opening
<b>820100</b>	100-cell, 0.49" (1.1cm) nominal opening
<b>4000221</b>	Cryo Marker Pens, four fine tip pens (black, blue, green and red) with fast-drying, non-smearing, permanent ink

### 6", 7 Day Temperature Recorders -100°C to +38°C (-148°F to +100°F)

Chart recorders are installed within easy view (e.g., eye level on uprights) and reach on our 8600 and 900 Series Freezers for easy monitoring and paper changes, and in the base of the 700 Series. These chart recorders are for current 120V and 230V Forma freezer models. Recorders for discontinued models are also available. Contact us for details.

<b>201240</b>	Recorder, customer installed*	Includes single felt-tip pen and box of chart paper.
<b>201241</b>	Recorder, factory installed	Includes single felt-tip pen and box of chart paper.
<b>17020</b>	Chart paper, 50 charts per box	
<b>245231</b>	Red felt-tip replacement pen	
<b>245232</b>	Blue felt-tip replacement pen	



\* Must be installed by qualified personnel



Cat. No. Description

**6", 7 Day Inkless Circular Chart Recorders +50°C to -115°C (-175°F to +122°F)**

(-175°F to 122°F), single pressure-sensitive pen, includes inkless pen and box of chart paper

201248	Inkless recorder, customary installed* (includes single pressure-sensitive inkless pen and box of chart paper)
201249	Inkless recorder, factory installed (includes single pressure-sensitive inkless pen and box of chart paper)
180000	Chart paper, 50 charts per box

**Datalogger Kits**

Our Datalogger Kits offer a straightforward solution when continuous monitoring and documentation of temperature is critical.

Our dataloggers have a memory capacity of 64,000 measured values, or data points. Temperature and/or humidity conditions are measured, stored and displayed, and alarm conditions are recorded. Remote alarm capability is optional.

201901	TP4-L Kit includes datalogger, four external sensors and bracket
201906	TP2 Kit includes datalogger, two external PT100 sensor, and bracket
201907	TP2 Kit includes datalogger, one external PT100 sensor, and bracket
201910	ELPRO Evaluation Software for Datalogger Kit No. 201901
201911	ELPRO Evaluation Software for Datalogger Kit No. 201906 and 201907



**Safety Back-Up Systems, Wall Clamp, and Hoses**

Back-up systems provide the convenience, reassurance, and reliability you need in the event of a power or mechanical failure. A CO<sub>2</sub> or LN<sub>2</sub> safety back-up system is a must for your critical storage applications.

**Back-up systems for upright and 3.0 and 6.7 cu.ft. chests**

195875	Deluxe CO <sub>2</sub> back-up, factory installed
195876	Deluxe CO <sub>2</sub> back-up, customer installed*
195877	LN <sub>2</sub> back-up, factory installed
195878	LN <sub>2</sub> back-up, customer installed

**Back-up systems for 12.7, 17.0 and 20.0 cu.ft. chests**

195943	Deluxe CO <sub>2</sub> back-up, factory installed
195944	Deluxe CO <sub>2</sub> back-up customer installed*
195945	LN <sub>2</sub> back-up, factory installed
195946	LN <sub>2</sub> back-up, customer installed*
950316	Wall clamp, CO <sub>2</sub> cylinder holder for securing tank to wall in accordance with OSHA regulations
991505	High pressure liquid CO <sub>2</sub> hose, kink resistant with stainless steel liner covered with double-braided stainless steel sheath, NPT Type 316 stainless steel female fitting, maximum working pressure 2500 psig in 6 ft. (1.8m) lengths
4000401	LN <sub>2</sub> transfer hose, flexible 6 ft. (1.8m) metal hose, 0.5" (1.3cm) diameter 45 degree flare with swivel ends

**SD3 Speech Dialler**

The SD3 Speech Dialler provides a means of communicating information to fixed and mobile telephones. It can either be connected to an alarm panel or used as a stand alone unit.

Consult your Thermo Scientific representative for details.



\* Must be installed by qualified personnel

Cat. No. Description

### Data Outputs

Although RS-232 and 4-40 milliamp analog outputs are standard on the 8600 Series, we offer the following options to meet your specific needs.

#### Optional Data Outputs, factory installed

195895	RS-232, 0-1V
195896	RS-232, 0-5V
195897	RS-485, 4-20 milliamp
195898	RS-485, 0-1V
195899	RS-485, 0-5V

RS-232 allows connection to a computer, recorder, or independent monitoring device. (RS-232 is not compatible with our Model 1535 Monitor/Alarm System). RS-485 allows direct connection to the Model 1535 Monitor/Alarm System.

### Cryo Gloves

#### Wrist-Length, 12.0" (30.5cm), one pair

189573	Small
189574	Medium
189575	Large

#### Mid-Arm Length, 14.0" to 15.0" (35.6cm to 38.1cm), one pair

189561	Medium
189562	Large
189575	Extra Large

#### Elbow-Length, 18.0" to 30.0" (45.7cm to 50.8cm), one pair

189564	Medium
189565	Large
189566	Extra Large

#### Shoulder-Length, 28.0" (71.1cm), one pair

189657	Medium
189568	Large
189569	Extra Large

### Inner Door Kits for Uprights

Interior compartment doors reduce cold air loss and improve temperature recovery after door closings. (Four interior doors are already included on our -86°C uprights).

189404	Interior Door Kit for Forma -40°C Lab Freezers (uprights), includes four interior doors with latches, factory installed
--------	---

#### Five Inner Door Option for 8600 and 900 Series, includes five powder coated inner doors and one additional shelf, factory installed

189405	For 13.0 cu.ft. uprights
189406	For 17.3 cu.ft. uprights
189407	For 23.0 cu.ft. uprights
195652	For 28.0 cu.ft. uprights



Cat. No. Description

## Water-Cooled Condense Option

The water-cooled condenser option is available for our -86°C uprights and -86°C 12.7, 17.0 and 20.0 cu.ft. chests.

Your work environment stays cooler because less heat is emitted to your surroundings (i.e., less BTU rejection). A water regulating valve automatically controls the water flow needed to maintain the compressor discharge pressure. Cooler compressor temperatures enhance compressor stability and reliability.

### Water-Cooled Condensers

<a href="#">195964</a>	For 13.0 cu.ft. uprights
<a href="#">195965</a>	For 17.3, 23.0, and 28.0 cu.ft. uprights
<a href="#">195967</a>	For 12.7, 17.0, and 20.0 cu.ft. chests

Like our standard freezers, those with the water-cooled condenser options are also UL Listed to Canadian and United States requirements and bear the CE Mark.

## Specifications

These specifications apply to tower and city water sources.

### Water Pressure and Temperature

Maximum Pressure	150 psig
Maximum Temperature	29.4°C (85°F)

### Connections

Inlet	0.5" compression
Outlet	.5" compression

### Water Flow Rate Required

Tower Water	3.0 gallons (11.4 liters) per minute
City Water	1.0 gallons (3.8 liters) per minute

### Drain Required?

Tower Water	No (return line is required)
City Water	Yes

Installation requires a qualified technician and should include proper adjustment of the regulating valve, which controls the discharge pressure.

Condenser options for discontinued freezer models are available. Contact us for details.

## Shelving for Uprights

### Stainless Steel Shelf Kits for 8600 and 900 Series, include mounting hardware

<a href="#">224134</a>	For 13.0 cu.ft. uprights
<a href="#">224135</a>	For 17.3 cu.ft. uprights
<a href="#">224158</a>	For 23.0 cu.ft. uprights
<a href="#">224180</a>	For 28.0 cu.ft. uprights

### Behind-the-Mullion Shelf for 8600 and 900 Series

<a href="#">195338</a>	For 13.0 cu.ft. double door uprights
<a href="#">195339</a>	For 17.3 cu.ft. double door uprights
<a href="#">195340</a>	For 23.0 cu.ft. double door uprights



Cat. No. Description

### Air Filter Replacement Kits

**Air Filter Replacement Kits, value pack of five filters**

**195890** For 8600, 900, and 700 Series uprights

**195947** For 3.0 and 6.7 cu.ft. chests

**195948** For 12.7, 17.0, and 20.0 cu.ft. chests

Air filters for discontinued freezer models are available. Contact us for details.

### Sample Probe Kits for 8600 Series Uprights

Probe kits are useful to measure sample temperature or top chamber temperature, assuring you of the sample temperature or uniformity between the top and bottom of the freezer.

**195892** Kit, customer installed\* (includes probe clip and probe)

**195893** Kit, factory installed (includes probe clip and probe)

### IQ/OQs

IQ/OQs, includes MS Windows-compatible document disk and detailed checklists to qualify unit setup and operation

**6008602** For 8600 Series -86°C freezers

**6000902** For 900 Series -86°C freezers

**6000702** For 700 Series -86°C freezers

**6000722** For 700 Series -40°C freezers

### Miscellaneous Accessories

**189620** Access Port, 1.3" inside diameter, factory installed

**195915** Unique key lock, factory installed

### Storage Tubes

Achieve secure, efficient tracking of laboratory samples with Thermo Scientific 2D Barcoded storage tubes.

Unlike traditional storage tubes, there is a permanently bonded 2D barcode laser-etched on the base of every tube for individual identification and traceability. Available in volumes from 0.3ml to 12.0ml, stringent quality control ensures flawless barcodes and all tubes are leak-tested to ensure the integrity of every sample. The microplate footprint tube racks with a locking lid to secure samples, are stackable to provide space efficiencies for storage.

Complementary Thermo Scientific 2D barcode readers allow instant decoding of each barcode and sample entry into virtually any file or database application, permanently linking the tube contents to the unique 2D code.

For more information, please visit [www.thermo.com/matrix](http://www.thermo.com/matrix).



## About Thermo Fisher Scientific

Thermo Fisher Scientific Inc. (NYSE: TMO) is the world leader in serving science, enabling our customers to make the world healthier, cleaner and safer. With an annual revenue rate of more than \$9 billion, we employ 30,000 people and serve over 350,000 customers within pharmaceutical and biotech companies, hospitals and clinical diagnostic labs, universities, research institutions and government agencies, as well as environmental and industrial process control settings. Serving customers through two premier brands, Thermo Scientific and Fisher Scientific, we help solve analytical challenges from routine testing to complex research and discovery. Thermo Scientific offers customers a complete range of high-end analytical instruments as well as laboratory equipment, software, services, consumables and reagents to enable integrated laboratory workflow solutions. Fisher Scientific provides a complete portfolio of laboratory equipment, chemicals, supplies and services used in healthcare, scientific research, safety and education. Together, we offer the most convenient purchasing options to customers and continuously advance our technologies to accelerate the pace of scientific discovery, enhance value for customers and fuel growth for shareholders and employees alike. Visit [www.thermofisher.com](http://www.thermofisher.com).

**North America:** USA/Canada +1 866 984 3766

[www.thermo.com/cold](http://www.thermo.com/cold)

**Europe:** Austria +43 1 801 40 0, Belgium +32 2 482 30 30, France +33 2 2803 2000, Germany national toll free 08001-536 376, Germany international +49 6184 90 6940, Italy +39 02 02 95059 434-254, Netherlands +31 76 571 4440, Nordic countries +358 9 329 100, Russia/CIS +7 (812) 703 42 15, Spain/Portugal +34 93 223 09 18, Switzerland +41 44 454 12 12, UK/Ireland +44 870 609 9203

**Asia:** China +86 21 6865 4588 or +86 10 8419 3588, India +91 22 6716 2200,

**Japan** +81 45 453 9220, Other Asian countries +852 2885 4613

**Countries not listed:** +49 6184 90 6940 or +33 2 2803 2000

© 2008 Thermo Fisher Scientific Inc. All rights reserved. Freezerworks is a trademark of Dataworks Development, Inc. SD3 Speech Dialler is a trademark of Cooper Security Ltd. All other trademarks are the property of Thermo Fisher Scientific Inc. and its subsidiaries. Specifications, terms and pricing are subject to change. Not all products are available in all countries. Please consult your local sales representative for details.

**Thermo**  
SCIENTIFIC